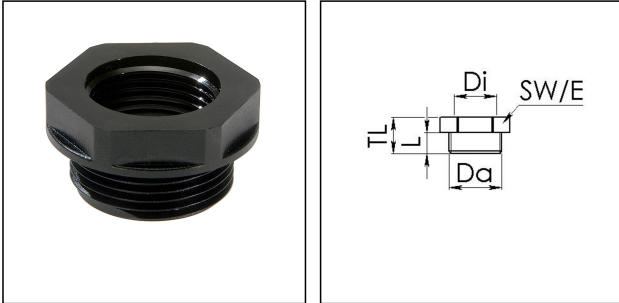


EX-KRM 63/40

Ex-reduction adaptor, polyamide, M63-M40



Products may differ in size, colour and appearance to those shown. If you require further information or customisation, please contact us directly.



Material	Polyamide, fibre reinforced
Temp. range min	-40 °C
Temp. range max	75 °C
Protection class	IP66 / IP68 (5 bar 30 min)
Marking	II 2 D Ex tb IIIC Db, II 2 G Ex eb IIC Gb
Approval	PTB 04 ATEX 1040 X, IECEx PTB 16.0026X
Thread type outer	M
Ø outer thread	63
Lead outer	1,5
Length screw-in thread L	15 mm
Thread type inner	M
Ø inner thread	40
Lead inner	1,5
Key width SW	68 mm
Collar diameter (E)	75 mm
Total length TL	22 mm
Form	B
Product Color	RAL 9005
Order no. RAL 9005	10064739
Type	EX-KRM 63/40
Packing unit	5
ETIM-Classification	EC000938

Your Contact:

WISKA Hoppmann GmbH

Kisdorfer Weg 28 · 24568 Kaltenkirchen · Germany

☎ +49-4191-508-0 · 📠 +49-4191-508-209

contact@wiska.de · www.wiska.com

Recommended accessories

EMUG 63

10061787

10.01.2020

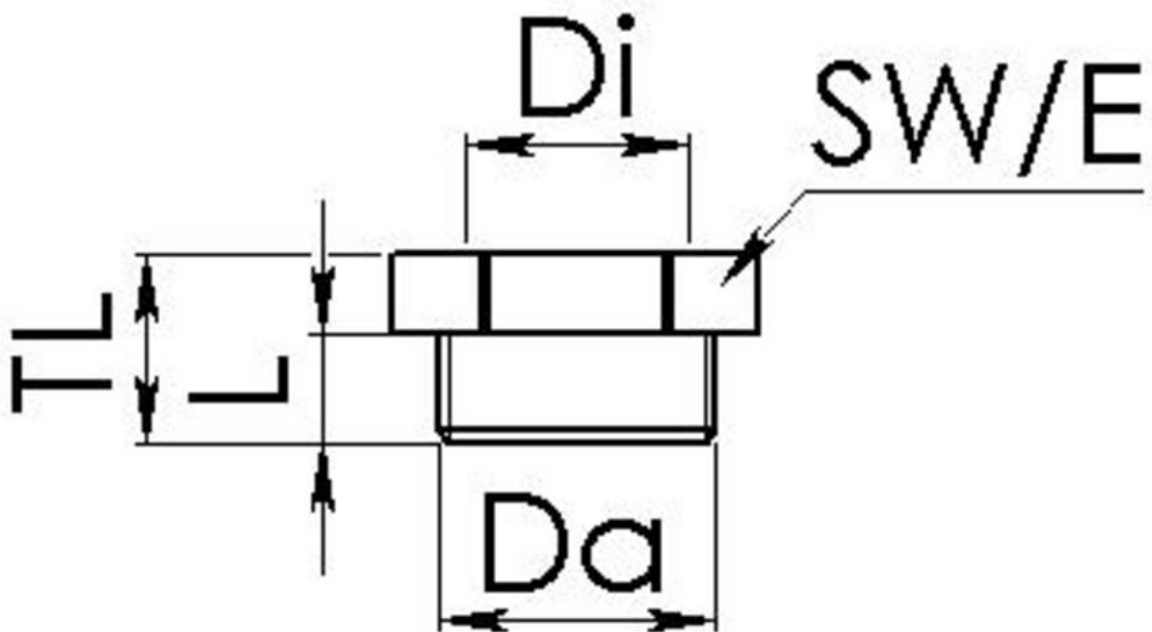
Your Contact:

WISKA Hoppmann GmbH

Kisdorfer Weg 28 · 24568 Kaltenkirchen · Germany

 +49-4191-508-0 ·  +49-4191-508-209

contact@wiska.de · www.wiska.com



Your Contact:

WISKA Hoppmann GmbH

Kisdorfer Weg 28 · 24568 Kaltenkirchen · Germany

☎ +49-4191-508-0 · 📠 +49-4191-508-209

contact@wiska.de · www.wiska.com